



SSPM's

Rani Laxmibai Mahavidyalaya, Parola



Report

On

**Student Satisfaction Survey
(2018-19)**

Student satisfaction survey

ON

Teaching Learning and Evolution

Student satisfaction survey (SSS) was conducted among the students of the college through an online web link. Students were randomly selected for the student satisfaction survey by feedback committee. Except particular student nobody was know we student has received the student satisfaction survey (SSS) email and what they have responded. Thus student will remain anonymous throughout the process.

The question is based on the likert type scale that means the students will have to give responses on a scale of 0 to 4 with the most positive response being rated as 4 and the most negative response being rated at 0. Analysis of the survey is done using software which will aggregate the response and generate the score of the student satisfaction survey which is important key indicator in overall grade of Institution.

In student satisfaction report (SSR) 20 of the 21 Questions objectives in nature, which one person is open ended to draw out observation and suggestions for improvement, thereby providing an opportunity to the student to give suggestions and criticism in their own words. The question consist of several facets on the teaching and learning process.

Student satisfaction report (SSR) is based on responses of about 52 to 100 students. The survey report is displayed on the college website and it is presented in the IQAC and college development committee meeting.

Where 0 - (Below 30%) 1-(30% to 54%) 2-(55% to 69%) 3-(70% to 84%)
And 4-(85% to 100%)

Student Satisfaction Survey(SSS)

Instruction to fill the questionnaire:

- All questions should be compulsory attempted.
- Each question has five responses, choose the most appropriate one.
- The response to the Qualitative question no 21 is student's opportunity to give suggestions or improvements. Students can also mentions weakness of the institute here .

Age

Name of Department

Gender

1) How much of the syllabus was covered in the class?

4. Strongly Agree 3. Agree 2. Neutral 1. Disagree 0. Strongly Disagree

2) How well did the teachers prepare for the classes?

4. Strongly Agree 3. Agree 2. Neutral 1. Disagree 0. Strongly Disagree

3) How well were the teachers able to communicate?

4. Strongly Agree 3. Agree 2. Neutral 1. Disagree 0. Strongly Disagree

4) The teacher's approach to teaching can best be described as

4. Strongly Agree 3. Agree 2. Neutral 1. Disagree 0. Strongly Disagree

5) Fairness of the internal evaluation process by the teachers.

4. Strongly Agree 3. Agree 2. Neutral 1. Disagree 0. Strongly Disagree

6) Was your performance in assignments discussed with you?

4. Strongly Agree 3. Agree 2. Neutral 1. Disagree 0. Strongly Disagree

7) The institute takes active interest in promoting internship, student exchange, field visit opportunities for students.

4. Strongly Agree 3. Agree 2. Neutral 1. Disagree 0. Strongly Disagree

8) The teaching and mentoring process in your institution facilitates you in cognitive, social and emotional growth.

4. Strongly Agree 3. Agree 2. Neutral 1. Disagree 0. Strongly Disagree

9) The institution provides multiple opportunities to learn and grow.

4. Strongly Agree 3. Agree 2. Neutral 1. Disagree 0. Strongly Disagree

10) Teachers inform you about your expected competencies, course outcomes and programme outcomes.

4. Strongly Agree 3. Agree 2. Neutral 1. Disagree 0. Strongly Disagree

11) Your mentor does a necessary follow-up with an assigned task to you.

4. Strongly Agree 3. Agree 2. Neutral 1. Disagree 0. Strongly Disagree

12) The teachers illustrate the concepts through examples and applications.

4. Strongly Agree 3. Agree 2. Neutral 1. Disagree 0. Strongly Disagree

13) The teachers identify your strengths and encourage you with providing right level of challenges.

4. Strongly Agree 3. Agree 2. Neutral 1. Disagree 0. Strongly Disagree

14) Teachers are able to identify your weaknesses and help you to overcome them.

4. Strongly Agree 3. Agree 2. Neutral 1. Disagree 0. Strongly Disagree

15) The institution makes effort to engage students in the monitoring, review and continuous quality improvement of the teaching learning process.

4. Strongly Agree 3. Agree 2. Neutral 1. Disagree 0. Strongly Disagree

16) The institute/ teachers use student centric methods, such as experiential learning, participative learning and problem solving methodologies for enhancing learning experiences.

4. Strongly Agree 3. Agree 2. Neutral 1. Disagree 0. Strongly Disagree

17) Teachers encourage you to participate in extracurricular activities.

4. Strongly Agree 3. Agree 2. Neutral 1. Disagree 0. Strongly Disagree

18) Efforts are made by the institute/ teachers to inculcate soft skills, life skills and employability skills to make you ready for the world of work.

4. Strongly Agree 3. Agree 2. Neutral 1. Disagree 0. Strongly Disagree

19) What percentage of teachers use ICT tools such as LCD projector, Multimedia, etc. while teaching.

4. Strongly Agree 3. Agree 2. Neutral 1. Disagree 0. Strongly Disagree

20) The overall quality of teaching-learning process in your institute is very good.

4. Strongly Agree 3. Agree 2. Neutral 1. Disagree 0. Strongly Disagree

21) Give three observation / suggestions to improve the overall teaching – learning experience in your institution.

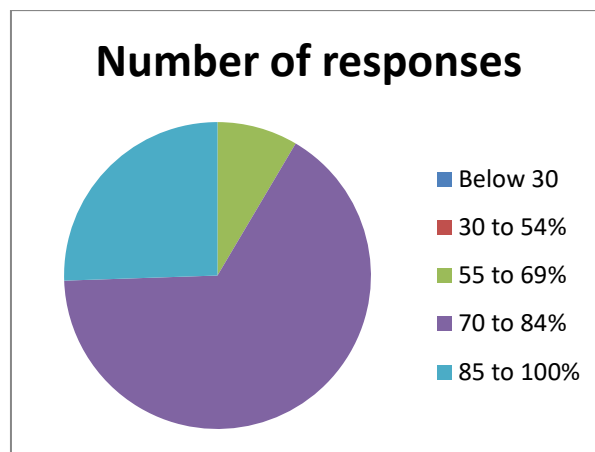
- _____
- _____
- _____
- _____
- _____
- _____

1) How much of the syllabus was covered in the class?

4. Strongly Agree 3. Agree 2. Neutral 1. Disagree 0. Strongly Disagree

Syllabus Covered	Number of responses	Percentage of the students
Below 30	00	00
30 to 54%	00	00
55 to 69%	04	8.51
70 to 84%	31	65.95
85 to 100%	12	25.53

From the table it is observed that more than 91.48 % students responses that 70% and more of their syllabus was covered in the class.

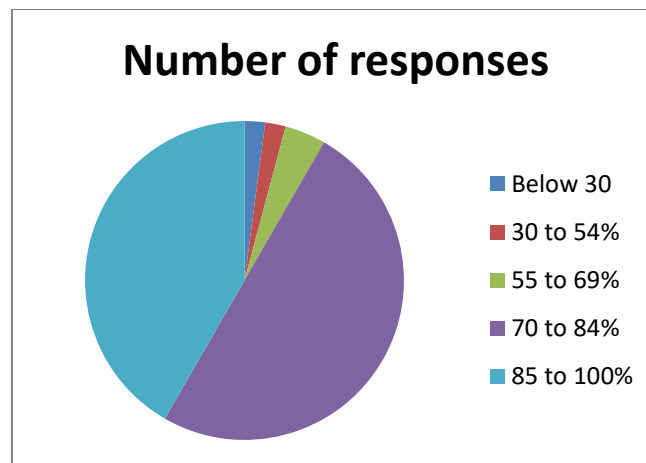


2) How well did the teachers prepare for the classes?

4. Strongly Agree 3. Agree 2. Neutral 1. Disagree 0. Strongly Disagree

Syllabus Covered	Number of responses	Percentage of the students
Below 30	01	2.12
30 to 54%	01	2.12
55 to 69%	02	4.25
70 to 84%	24	51.06
85 to 100%	20	42.55

From the table it is observed that more than 93.61 % student's responses that 70% and more well the teacher prepare for the classes.

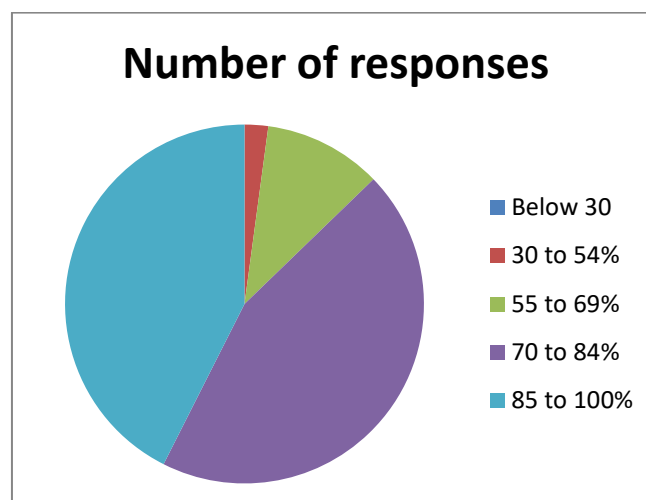


3) How well were the teachers able to communicate?

4. Strongly Agree 3. Agree 2. Neutral 1. Disagree 0. Strongly Disagree

Syllabus Covered	Number of responses	Percentage of the students
Below 30	00	00
30 to 54%	01	2.12
55 to 69%	05	1.63
70 to 84%	21	44.68
85 to 100%	20	42.55

From the table it is observed that more than 87.23 % students responses that 70% and more the teachers are well able to communicate.

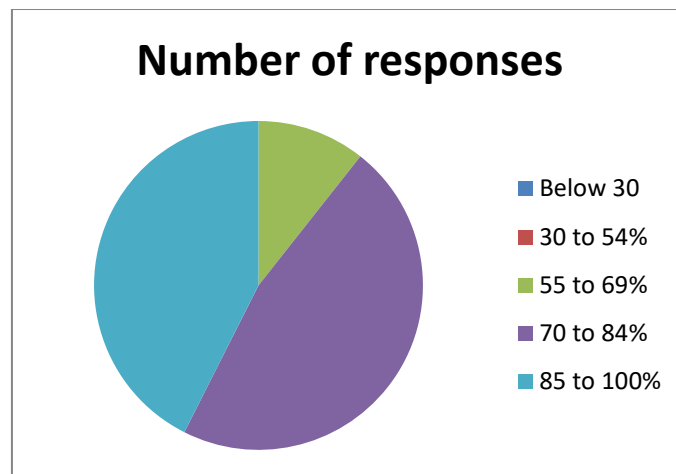


4) The teacher's approach to teaching can best be described as

4. Strongly Agree 3. Agree 2. Neutral 1. Disagree 0. Strongly Disagree

Syllabus Covered	Number of responses	Percentage of the students
Below 30	00	00
30 to 54%	00	00
55 to 69%	05	10.63
70 to 84%	22	46.80
85 to 100%	20	42.55

From the table it is observed that more than 89.35 % students responses that 70% and more the teacher's approach to teaching can best be described.

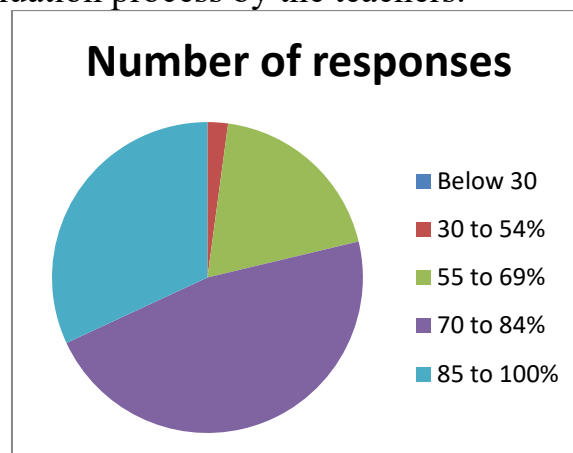


5) Fairness of the internal evaluation process by the teachers.

4. Strongly Agree 3. Agree 2. Neutral 1. Disagree 0. Strongly Disagree

Syllabus Covered	Number of responses	Percentage of the students
Below 30	00	00
30 to 54%	01	2.12
55 to 69%	09	19.14
70 to 84%	22	46.80
85 to 100%	15	31.91

From the table it is observed that more than 78.71 % students' responses that 70% and more fairness of the internal evaluation process by the teachers.

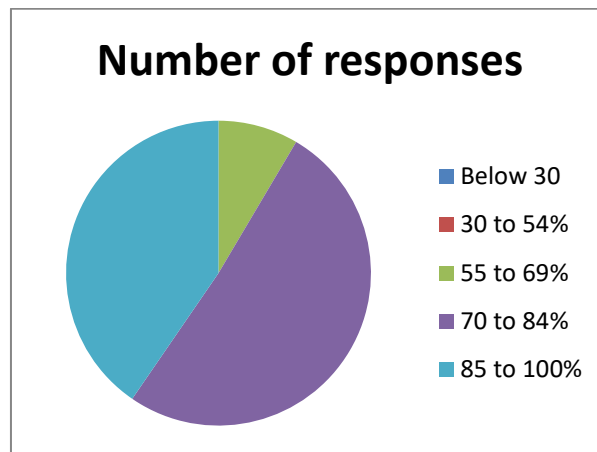


6) Was your performance in assignments discussed with you?

4. Strongly Agree 3. Agree 2. Neutral 1. Disagree 0. Strongly Disagree

Syllabus Covered	Number of responses	Percentage of the students
Below 30	00	00
30 to 54%	00	00
55 to 69%	04	8.51
70 to 84%	24	51.06
85 to 100%	19	40.42

From the table it is observed that more than 91.48 % students responses that 70% and more our performance in assignment discussed with us.

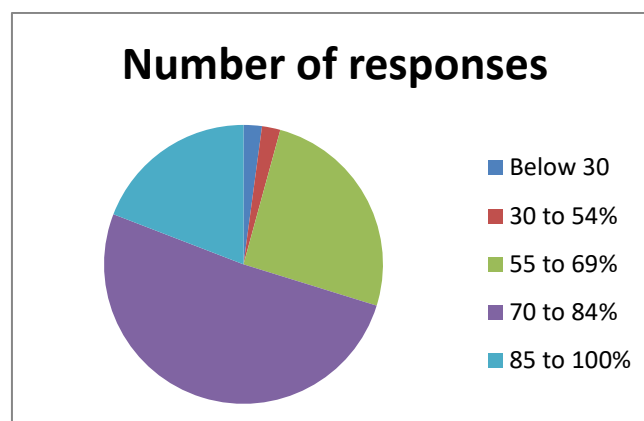


7) The institute takes active interest in promoting internship, student exchange, field visit opportunities for students.

4. Strongly Agree 3. Agree 2. Neutral 1. Disagree 0. Strongly Disagree

Syllabus Covered	Number of responses	Percentage of the students
Below 30	01	2.12
30 to 54%	01	2.12
55 to 69%	12	25.53
70 to 84%	24	51.07
85 to 100%	09	19.14

From the table it is observed that more than 70.20 % students responses that 70% and more the institute takes active interest in promoting internship, student exchange, field visit opportunities for students

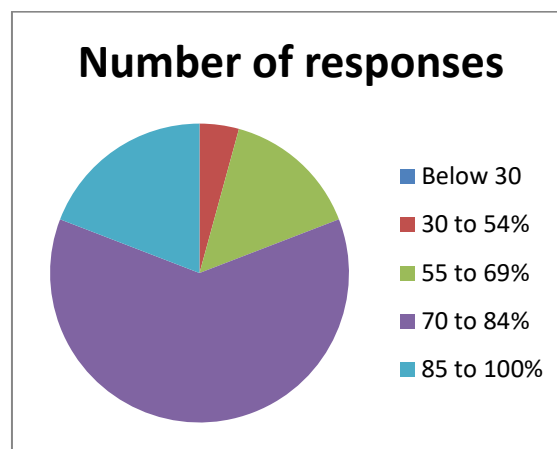


8) The teaching and mentoring process in your institution facilitates you in cognitive, social and emotional growth.

4. Strongly Agree 3. Agree 2. Neutral 1. Disagree 0. Strongly Disagree

Syllabus Covered	Number of responses	Percentage of the students
Below 30	00	00
30 to 54%	02	4.25
55 to 69%	07	14.89
70 to 84%	29	61.70
85 to 100%	09	19.14

From the table it is observed that more than 80.84 % students responses that 70% and more the teaching and mentoring process in our institution facilities you in cognitive, social and emotional growth.

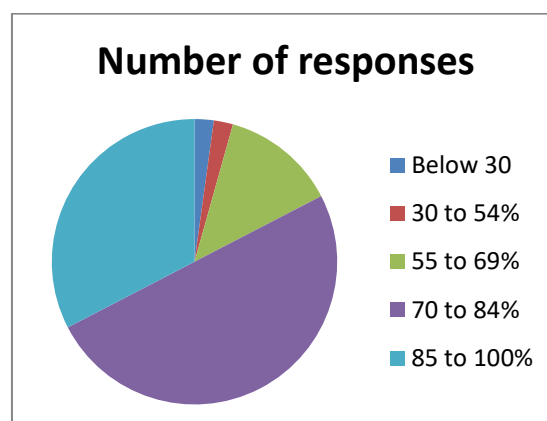


9) The institution provides multiple opportunities to learn and grow.

4. Strongly Agree 3. Agree 2. Neutral 1. Disagree 0. Strongly Disagree

Syllabus Covered	Number of responses	Percentage of the students
Below 30	01	2.12
30 to 54%	01	2.12
55 to 69%	06	12.76
70 to 84%	23	48.93
85 to 100%	15	31.91

From the table it is observed that more than 80.84 % students responses that 70% and more the institution provide multiple opportunity to learn and grow.

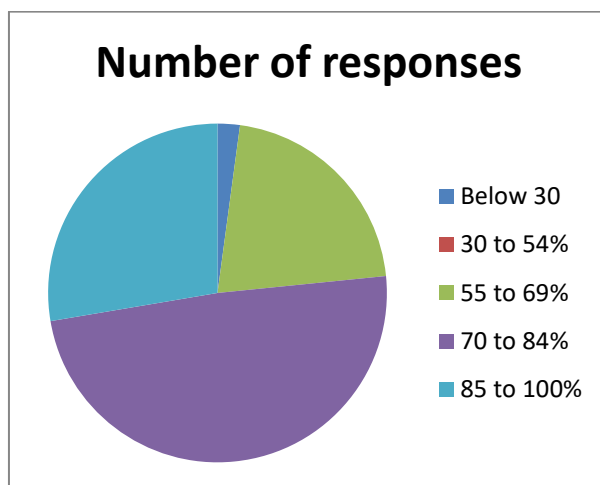


10) Teachers inform you about your expected competencies, course outcomes and programme outcomes.

4. Strongly Agree 3. Agree 2. Neutral 1. Disagree 0. Strongly Disagree

Syllabus Covered	Number of responses	Percentage of the students
Below 30	01	2.12
30 to 54%	00	00
55 to 69%	10	21.27
70 to 84%	23	48.93
85 to 100%	13	27.65

From the table it is observed that more than 76.58 % students responses that 70% and more teacher inform us about our expected competencies, course outcomes and programme outcomes.

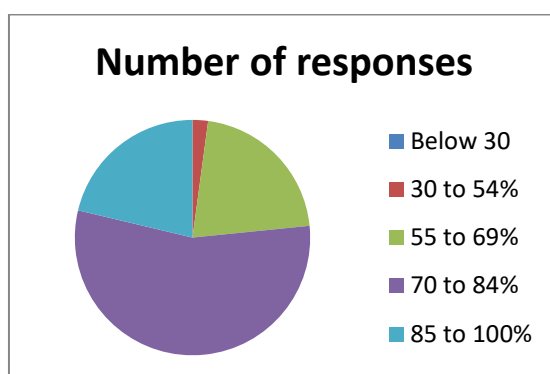


11) Your mentor does a necessary follow-up with an assigned task to you.

4. Strongly Agree 3. Agree 2. Neutral 1. Disagree 0. Strongly Disagree

Syllabus Covered	Number of responses	Percentage of the students
Below 30	00	00
30 to 54%	01	2.12
55 to 69%	10	21.27
70 to 84%	26	55.31
85 to 100%	10	21.27

From the table it is observed that more than 76.58 % students responses that 70% and more our mentor does necessary follow-up with an assigned task to you.

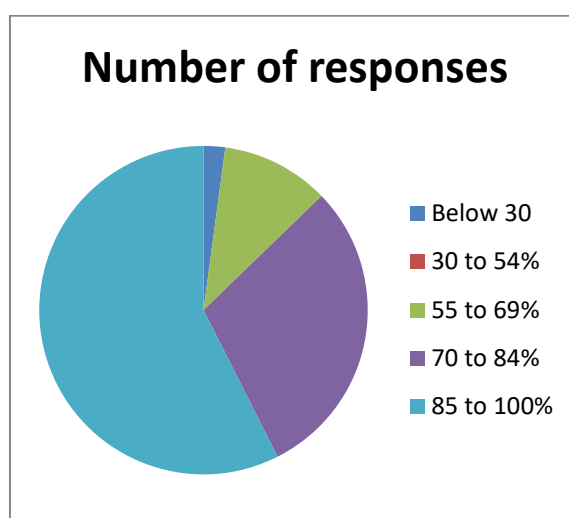


12) The teachers illustrate the concepts through examples and applications.

4. Strongly Agree 3. Agree 2. Neutral 1. Disagree 0. Strongly Disagree

Syllabus Covered	Number of responses	Percentage of the students
Below 30	01	2.12
30 to 54%	00	00
55 to 69%	05	10.63
70 to 84%	14	29.78
85 to 100%	27	57.44

From the table it is observed that more than 87.22 % students responses that 70% and more the teachers illustrate the concepts through examples and applications.

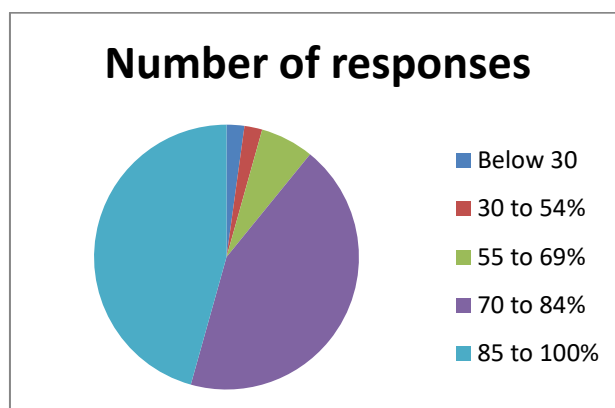


13) The teachers identify your strengths and encourage you with providing right level of challenges.

4. Strongly Agree 3. Agree 2. Neutral 1. Disagree 0. Strongly Disagree

Syllabus Covered	Number of responses	Percentage of the students
Below 30	01	2.12
30 to 54%	01	2.12
55 to 69%	03	6.38
70 to 84%	20	42.55
85 to 100%	21	44.68

From the table it is observed that more than 87.23% students responses that 70% and more teachers identify your strengths and encourage us with providing right level of challenges.

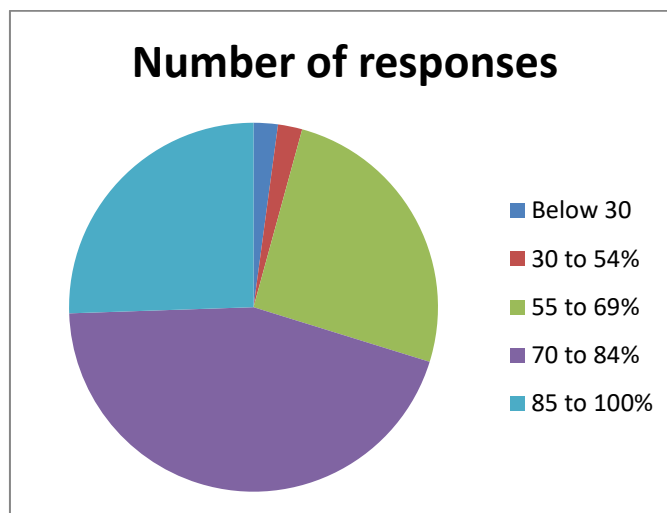


14) Teachers are able to identify your weaknesses and help you to overcome them.

4. Strongly Agree 3. Agree 2. Neutral 1. Disagree 0. Strongly Disagree

Syllabus Covered	Number of responses	Percentage of the students
Below 30	01	2.12
30 to 54%	01	2.12
55 to 69%	12	25.53
70 to 84%	21	44.68
85 to 100%	12	25.53

From the table it is observed that more than 70.21% students responses that 70% and more teachers are able to identify your weaknesses and help us to overcome them

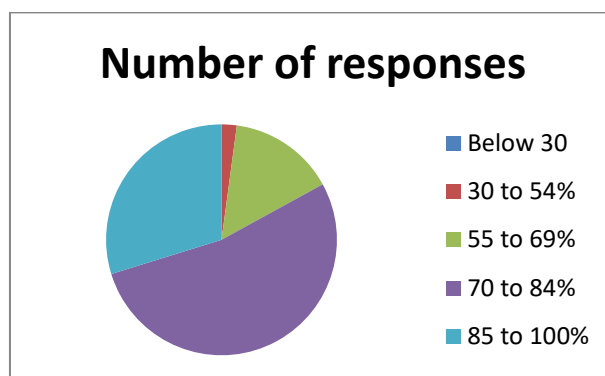


15) The institution makes effort to engage students in the monitoring, review and continuous quality improvement of the teaching learning process.

4. Strongly Agree 3. Agree 2. Neutral 1. Disagree 0. Strongly Disagree

Syllabus Covered	Number of responses	Percentage of the students
Below 30	00	00
30 to 54%	01	2.12
55 to 69%	07	14.89
70 to 84%	25	53.19
85 to 100%	14	29.78

From the table it is observed that more than 82.97 % students responses that 70% and more the institution makes effort to engage students in the monitoring, review and continuous quality improvement of the teaching learning process.

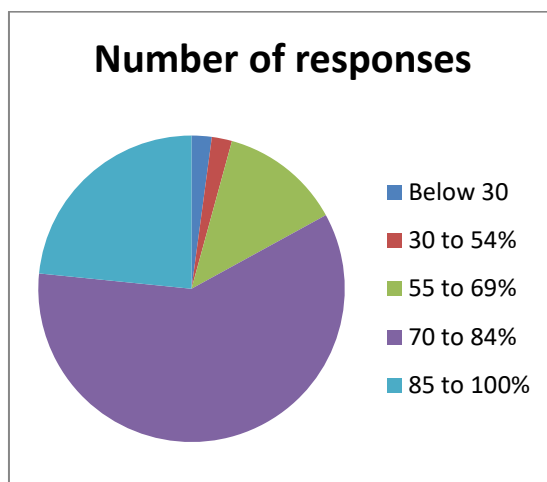


16) The institute/ teachers use student centric methods, such as experiential learning, participative learning and problem solving methodologies for enhancing learning experiences.

4. Strongly Agree 3. Agree 2. Neutral 1. Disagree 0. Strongly Disagree

Syllabus Covered	Number of responses	Percentage of the students
Below 30	01	2.12
30 to 54%	01	2.12
55 to 69%	06	12.76
70 to 84%	28	59.57
85 to 100%	11	23.40

From the table it is observed that more than 82.97 % students responses that 70% and more the teachers use student centric methods, such as experiential learning, participative learning and problem solving methodologies for enhancing learning experiences.

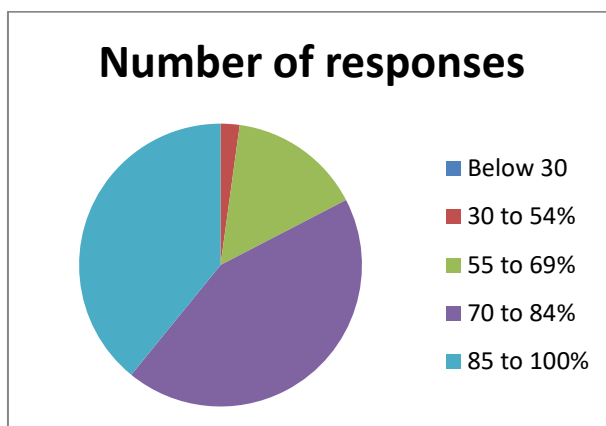


17) Teachers encourage you to participate in extracurricular activities.

4. Strongly Agree 3. Agree 2. Neutral 1. Disagree 0. Strongly Disagree

Syllabus Covered	Number of responses	Percentage of the students
Below 30	00	00
30 to 54%	01	2.12
55 to 69%	07	14.89
70 to 84%	20	42.55
85 to 100%	18	38.29

From the table it is observed that more than 80.84% students responses that 70% and more teachers encourage us to participate in extracurricular activities.

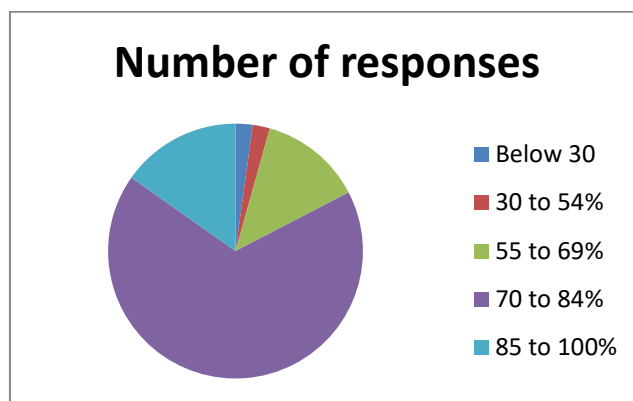


18) Efforts are made by the institute/ teachers to inculcate soft skills, life skills and employability skills to make you ready for the world of work.

4. Strongly Agree 3. Agree 2. Neutral 1. Disagree 0. Strongly Disagree

Syllabus Covered	Number of responses	Percentage of the students
Below 30	01	2.12
30 to 54%	01	2.12
55 to 69%	06	12.76
70 to 84%	31	65.95
85 to 100%	07	14.89

From the table it is observed that more than 80.84% students responses that 70% and more Efforts are made by the institute/ teachers to inculcate soft skills, life skills and employability skills to make students ready for the world of work.

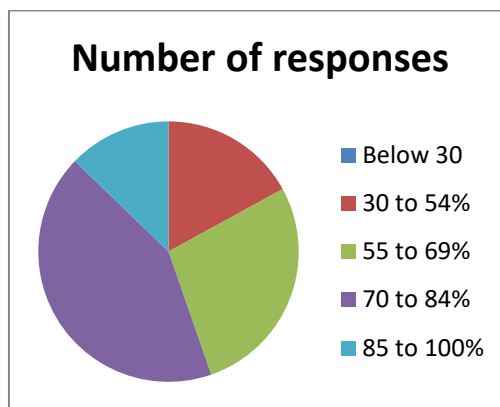


19) What percentage of teachers use ICT tools such as LCD projector, Multimedia, etc. while teaching.

4. Strongly Agree 3. Agree 2. Neutral 1. Disagree 0. Strongly Disagree

Syllabus Covered	Number of responses	Percentage of the students
Below 30	00	00
30 to 54%	08	17.02
55 to 69%	13	27.65
70 to 84%	20	42.55
85 to 100%	06	12.76

From the table it is observed that more than 55.31% students responses that 70% and more teachers use ICT tools such as LCD projector, Multimedia, etc. while teaching.

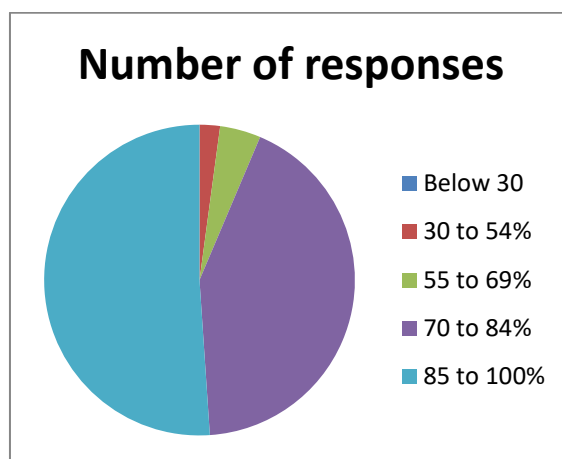


20) The overall quality of teaching-learning process in your institute is very good.

4. Strongly Agree 3. Agree 2. Neutral 1. Disagree 0. Strongly Disagree

Syllabus Covered	Number of responses	Percentage of the students
Below 30	00	00
30 to 54%	01	2.12
55 to 69%	02	4.25
70 to 84%	20	42.55
85 to 100%	24	51.06

From the table it is observed that more than 93.61% students responses that 70% and more the overall quality of teaching learning process in our institute is very good.



Sr. No.	Questionaries'	Average Score
1	How much of the syllabus was covered in the class?	91.48
2	How well did the teachers prepare for the classes?	93.61
3	How well were the teachers able to communicate?	87.30
4	The teacher's approach to teaching can best be described as	89.35
5	Fairness of the internal evaluation process by the teachers.	78.71
6	Was your performance in assignments discussed with you?	91.48
7	The institute takes active interest in promoting internship, student exchange, field visit opportunities for students.	70.20
8	The teaching and mentoring process in your institution facilitates you in cognitive, social and emotional growth.	80.84
9	The institution provides multiple opportunities to learn and grow.	80.84
10	Teachers inform you about your expected competencies, course outcomes and programme outcomes	76.58
11	Your mentor does a necessary follow-up with an assigned task to you.	76.58
12	The teachers illustrate the concepts through examples and applications.	87.22
13	The teachers identify your strengths and encourage you with providing right level of challenges.	87.23
14	Teachers are able to identify your weaknesses and help you to overcome them.	70.21
15	The institution makes effort to engage students in the monitoring, review and continuous quality improvement of the teaching learning process.	82.97
16	The institute/ teachers use student centric methods, such as experiential learning, participative learning and problem solving methodologies for enhancing learning experiences.	82.97
17	Teachers encourage you to participate in extracurricular activities.	80.84
18	Efforts are made by the institute/ teachers to inculcate soft skills, life skills and employability skills to make you ready for the world of work.	80.84
19	What percentage of teachers use ICT tools such as LCD projector, Multimedia, etc. while teaching.	55.31
20	The overall quality of teaching-learning process in your institute is very good.	93.61

Findings

- 1) 77% of students responded that 70% and more of their syllabus was covered in the class.
- 2) 94% of students responded that their teachers prepare well for the classes was satisfactorily and thoroughly.
- 3) 87% of students responded that the teachers are ably effective in communication.
- 4) 74% of students responded that the teacher's approach to teaching can best be described.
- 5) 89% of students responded that teachers are fair in the internal evaluation process.
- 6) 82% of students responded that every time and usually teachers discuss their performance of assignments.
- 7) 73% of students responded that the institute takes active interest in promoting internship, student exchange, field visit opportunities for them.
- 8) 81% of students responded that the teaching and mentoring process in the institution facilitates them in cognitive, social and emotional growth.
- 9) 85% of students responded that their institution provides multiple opportunities to learn and grow.
- 10) 86% of students responded that their teachers every time and usually inform about the expected competencies, course outcomes and programme outcomes.
- 11) 86% of students responded that their mentor every time and usually does a necessary follow-up with an assigned task to you.
- 12) 91% of students responded that their teachers every time and usually illustrate the concepts through examples and applications.
- 13) 86% of students responded that their teachers fully and reasonably identify your strengths and encourage you with providing right level of challenges.
- 14) 79% of students responded that their teachers are able to identify the students' weaknesses and help you to overcome them.

- 15) 82 %of students responded that the institution makes effort to engage students in the monitoring, review and continuous quality improvement of the teaching learning process.
- 16) 88% of students are agree with the fact that, their institute/ teachers use student centric methods, such as experiential learning, participative learning and problem-solving methodologies for enhancing learning experiences.
- 17) 87% of student responded that they agree that the teachers encourage to participate in extracurricular activities.
- 18) 85% students responded moderate efforts are made by the institute/teachers inculcate soft skills, life skills and employability skills.
- 19) 82% student responded that above 90 % of teachers use ICT tools.
- 20) 88 % responded agree about the overall quality teaching-learning process .

Action taken report:

The stakeholder's responses were analyzed to prepare summarized report which was communicated with BOS members of the different subjects and university authority.

